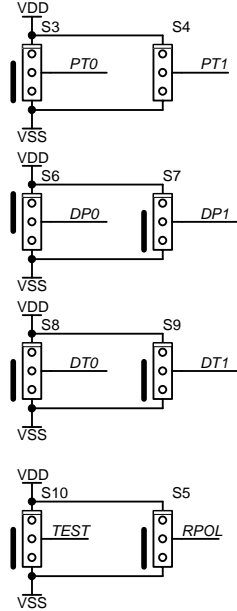
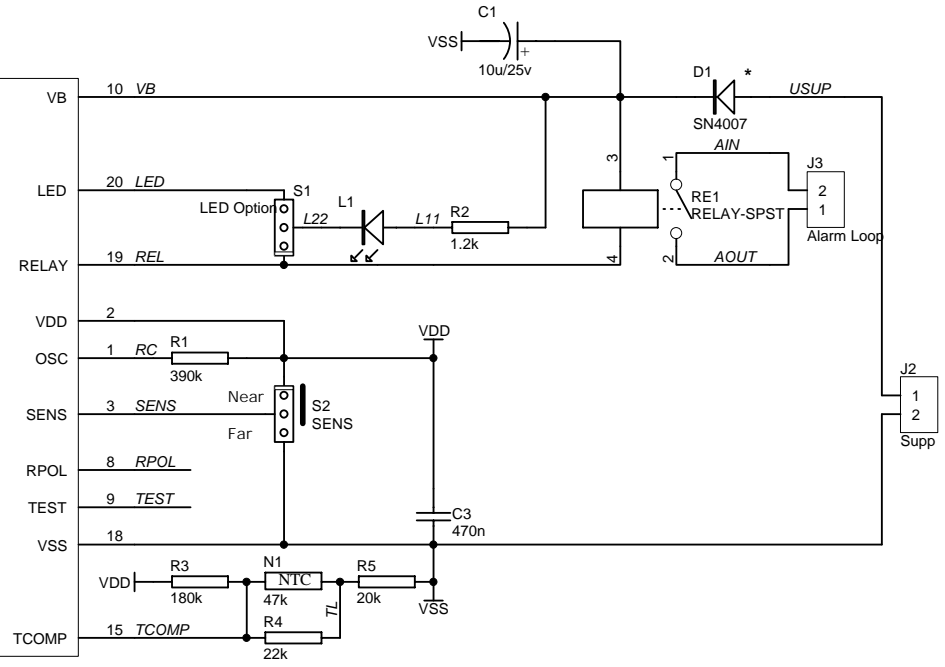
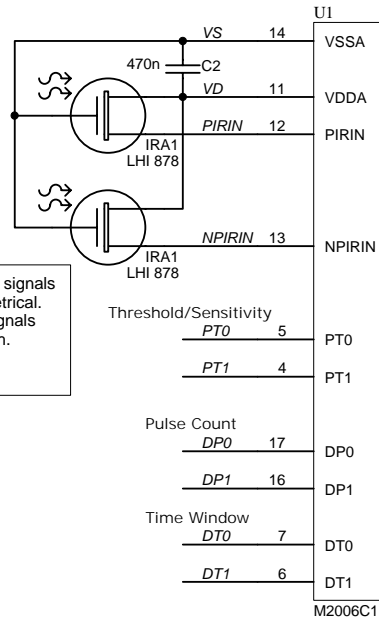


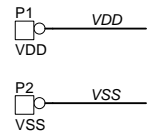
**Jumpers typically hard wired factory options**



The PIRIN and NPIRIN signals must be routed symmetrical. The tracks on these signals must be of equal length.



**Testpins**

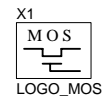
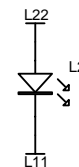


**Options :**  
 Alarm Loop NO  
 -RPOL VSS  
 Alarm loop is NC  
 - RPOL VDD

**S1 Options:**  
 - LED react the same as Relay output (LED ia in paralelle to relay)  
 - LED connected to LED output of device  
 - No Jumper, LED Off

**S2 Options:**  
 -SENS = VDD, Sensitivity x 1  
 -SENS = VSS, Sensitivity x 2  
 Optional D1\*  
 Protect against reverse supply voltage

**Optional footprints**



Title <b>M2006C Dual sensor PIR Motion Detector</b>		MOS (Pty) Ltd. Microsystems on Silicon	
Size: <b>A4</b>	Number:	Revision:	www.mos.co.za
File: m2006c_double.sch	Date: 12-Nov-2003	Time: 09:32:21	Sheet 1 of 1